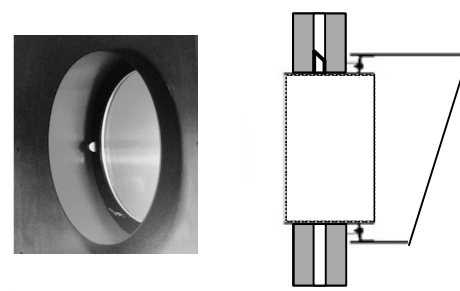
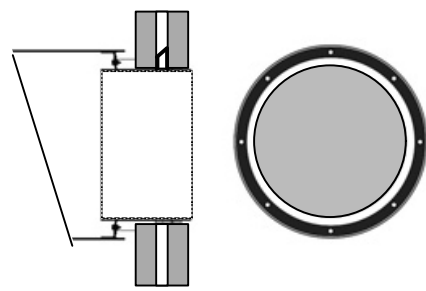


# villa moderno

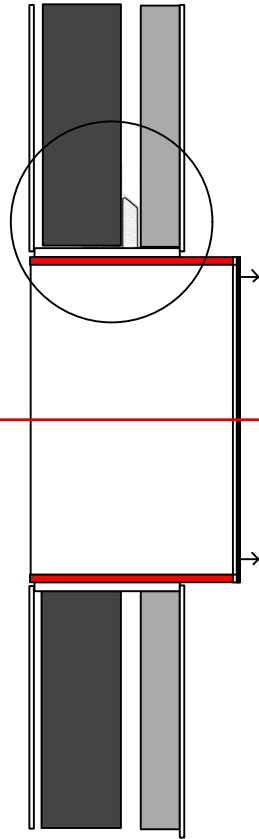
2 round (typical pediment) windows require special spun steel lintols



there are 12 floor to ceiling sash windows plus 2 entrance doors using IG L6 range



there are 12 projecting & recessed slot windows plus 4 recessed using IG L5 range



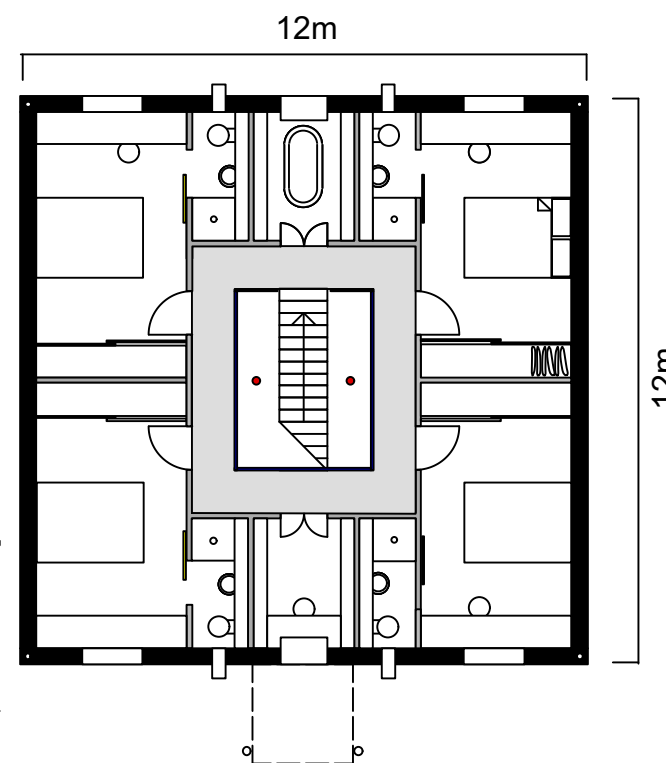
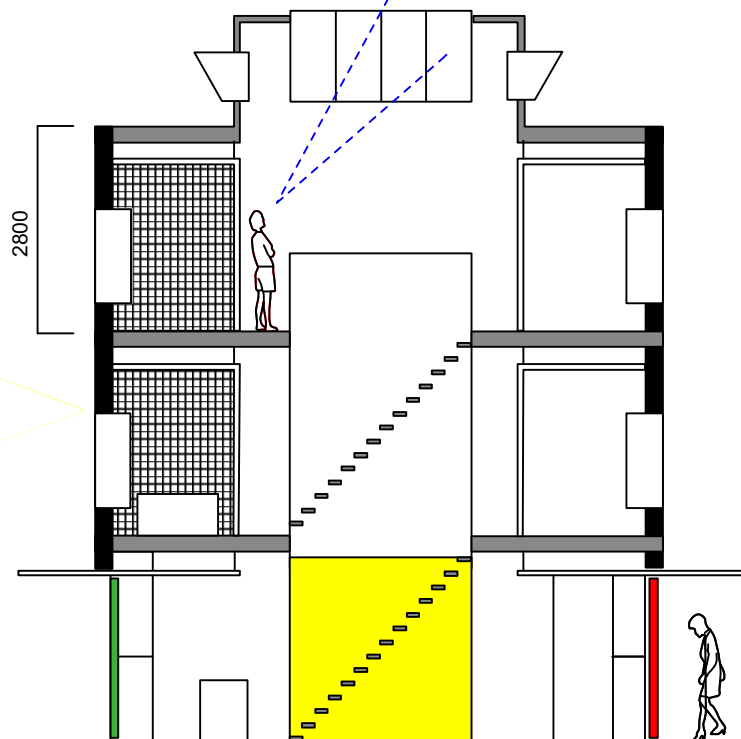
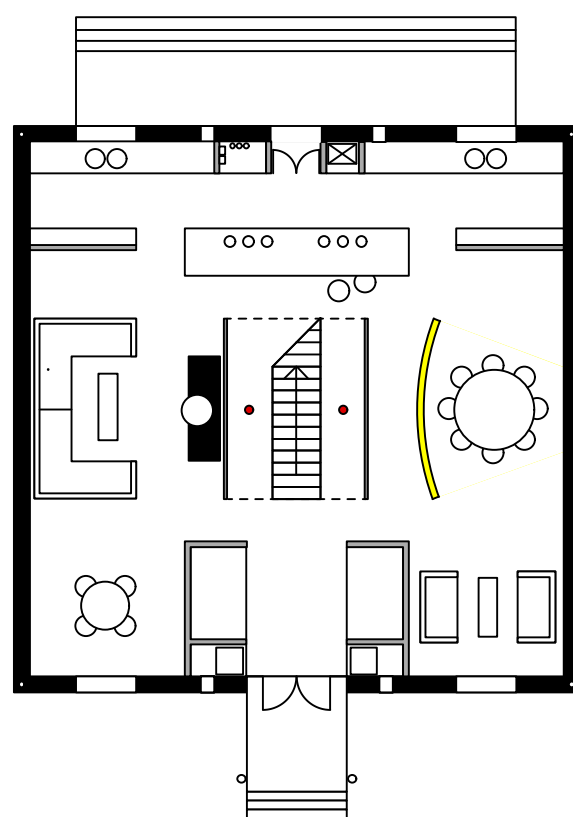
L6 series

**villa moderno** has 30 window openings in the three storey version - 20 in the 2 storey + 2 doors. these consist of 3 groups of 3 - a high almost floor to ceiling georgian style but deeply recessed, a smaller version on the centreline and a slim projecting slot ventilating shower rooms & kitchens. in true villa tradition thicker than usual walls need specialist lintols designed to take the weight of a heavier inner skin. all windows use special steel frames for a clean precise effect.

IG steel lintols are used throughout



L5 series



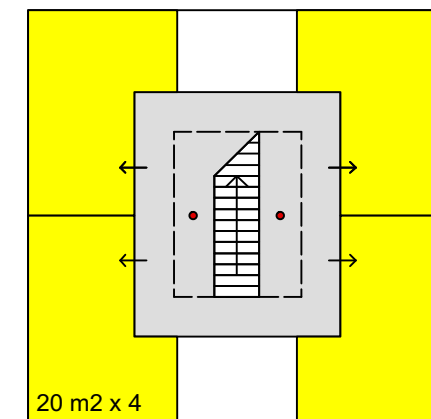
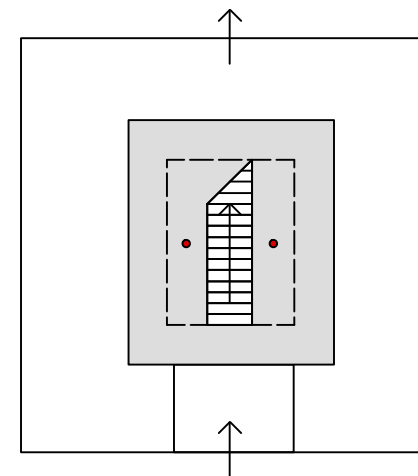
classical proportions - but breaking with tradition by having modern minimal detailing and simple surface treatment



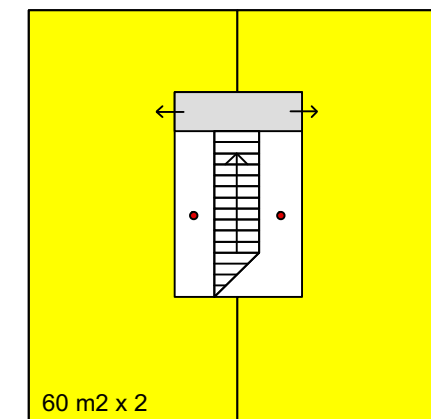
this is **greencroft gardens** london NW6 - an inner suburb built in the late 19th century extending the great estates of hampstead to the southwest. this area is unusual in that there are a great many very closely arranged brick 'villa' style residences originally 1 family but latterly mostly converted into multiple ownership of either 3 flats, six flats or 12 studio flats - street population approx 3000 +



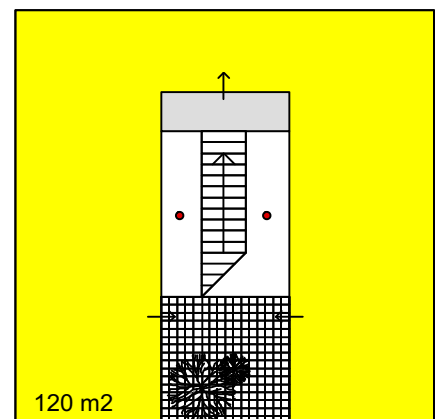
I have chosen to replicate and improve upon a concept which we believe not only provides a traditional classical villa design, but because of the inbuilt flexibility of a symmetrical 'neo' classical central stair layout, can be arranged for house sharing as well as for subdivision into separate flats. this provides 3 story villas for greencroft gardens, but can have a 2 story typology as show below....



20 m2 x 4



60 m2 x 2

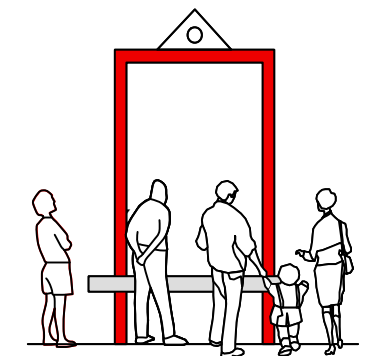


120 m2

**villas** whether neo classical in the true sense, or a mixture of 19th century or even mock tudor style, have become a familiar almost ubiquitous symbol of british inner suburb living. their plan form can be interpreted flexibly, but their true appeal lies in the lifestyle that they provide - a sense of **grand entrance** with communal circulation space. a central door - a **portico** and a beautiful staircase



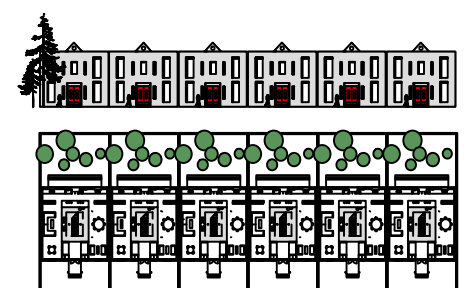
imagine...



discover



enjoy friendships



develop communities...

**share a villa** is an interpretation of this traditional concept using modern materials (eg subtle steel lintols over planar glass recessed and projecting bays) to make villa living wholly in tune with a contemporary lifestyle. this villa plan above allows a 'share a villa' layout over 2 storeys with a communal ground floor for 4 people. the 3 storey version for **greencroft gardens** divides into self contained flats