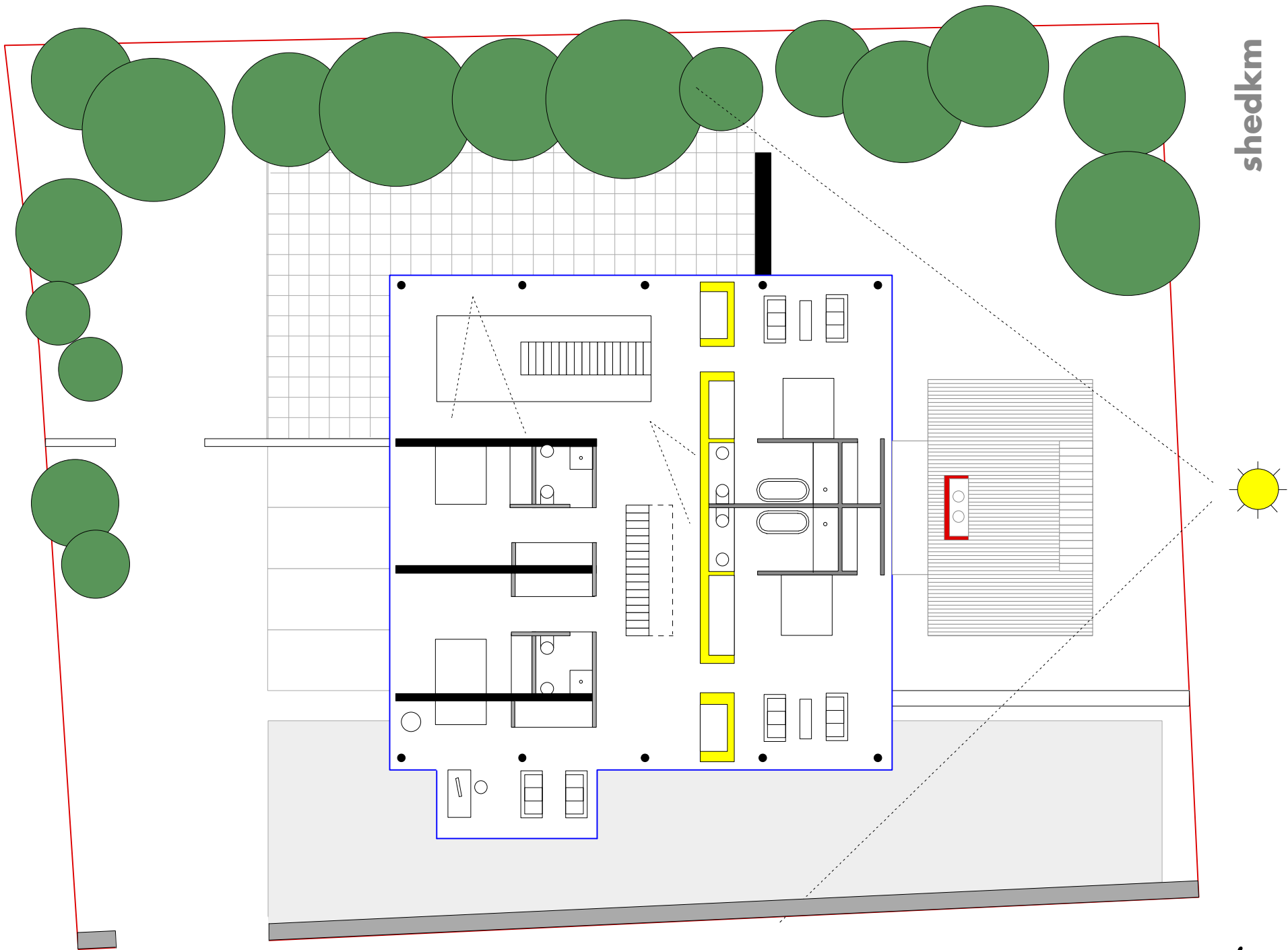


shedkm

casamaire



shedkm

casamaire

**the house nestles on its almost square site behind a red sandstone wall two meters high
it is approached through a timber sliding gate leading to wild planted area to the right
a row of five columns support the living areas above the parking and four car garage
a sliding gate leads to a secured main entrance in a hard paved courtyard with sculptures
a straight stair accesses the main living floor - further in is a wetroom with garden access
the garden is soft grass with trees and bushes in contrast to the hard entrance courtyard
there is an exceptionally large store behind the garage which also leads to the garden
on the first floor there is a technical kitchen, a large dining area and settees plus TV
there's a suspended deck with a barbecue immediately next to the kitchen/dining area
a winter living room with a big open fireplace also has a family dining/games table
central to the living floor is a 'long gallery' - this house is designed to exhibit artworks
the upper floor has five bedrooms and four bathrooms + a stair to an optional 'loft'
these plans constitute an 'ideagram' only for an appropriately sized house for this site**